

Software Description: Wave59 Bridge

Overview:

Wave59 Bridge is a powerful software tool that seamlessly connects **Wave59** charting software with **MetaTrader 4** and **MetaTrader 5** (MT4/MT5) platforms. By acting as a bridge between the two platforms, Wave59 Bridge enables users to access live price feeds and historical data directly from their MetaTrader accounts within the **Wave59** environment. This integration facilitates more comprehensive and in-depth analysis, enabling traders to make well-informed decisions and execute strategies more effectively.

Key Features:

Real-time Price Feed: Wave59 Bridge captures live price data from the connected MetaTrader 4 and/or MetaTrader 5 accounts and transmits it in real-time to Wave59 charting software. This ensures traders have access to the latest market movements and updates without delays.

Historical Data Collection: The software efficiently collects historical price data from the MetaTrader platforms and securely sends it to the Wave59 database. This comprehensive historical data enhances the accuracy of back testing and allows traders to analyze market behavior across different time frames.

Automated Symbol Detection: Wave59 Bridge intelligently detects symbols and instruments present in the MetaTrader accounts. As new symbols are added or existing ones modified, the software automatically adapts to ensure a continuous and uninterrupted data flow.

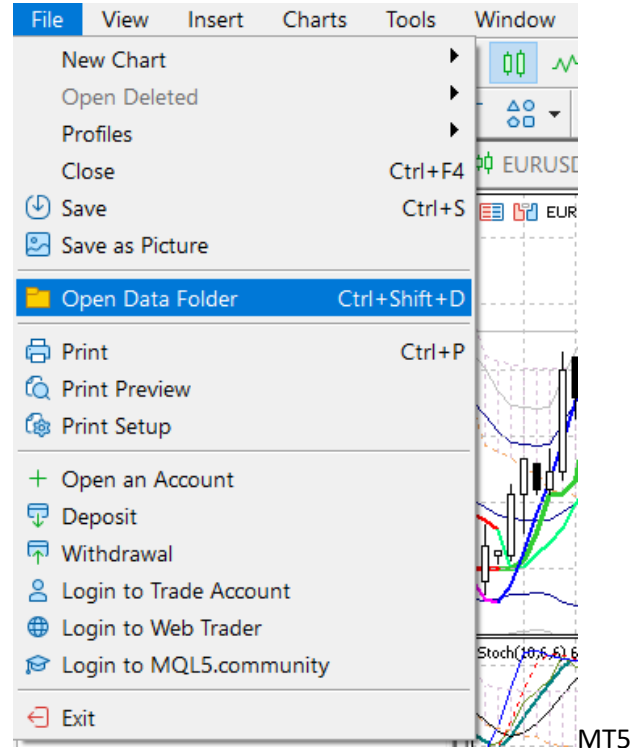
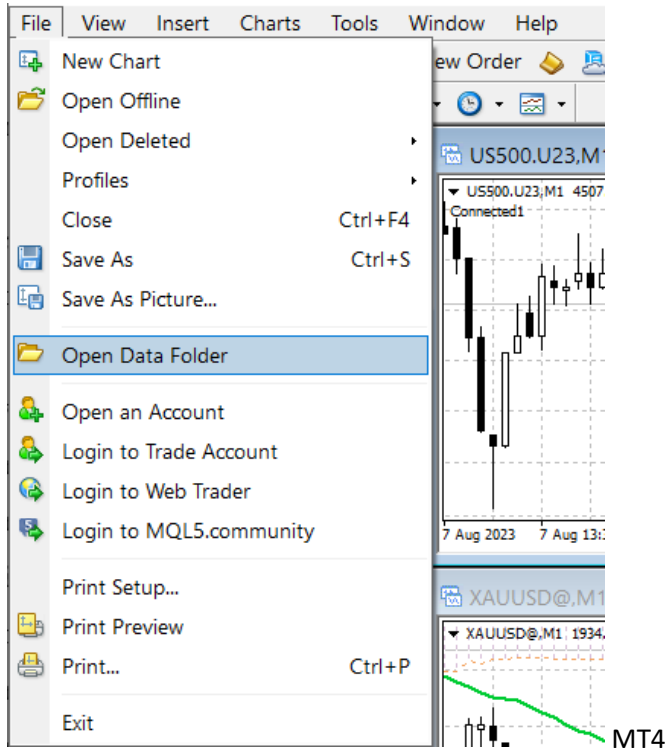
Exclusivity: Wave59 Bridge stands as the first and only software that bridges the gap between **Wave59** and **MetaTrader** platforms. Its unique capabilities provide traders with unprecedented access to critical data, opening up new possibilities for analysis and trading strategies, enriching the trading experience for the Wave59 community.

User-friendly Interface: With an intuitive and user-friendly interface, **Wave59 Bridge** is designed to streamline the data integration process. Traders can effortlessly set up connections, adjust settings, and access data within the familiar Wave59 environment.

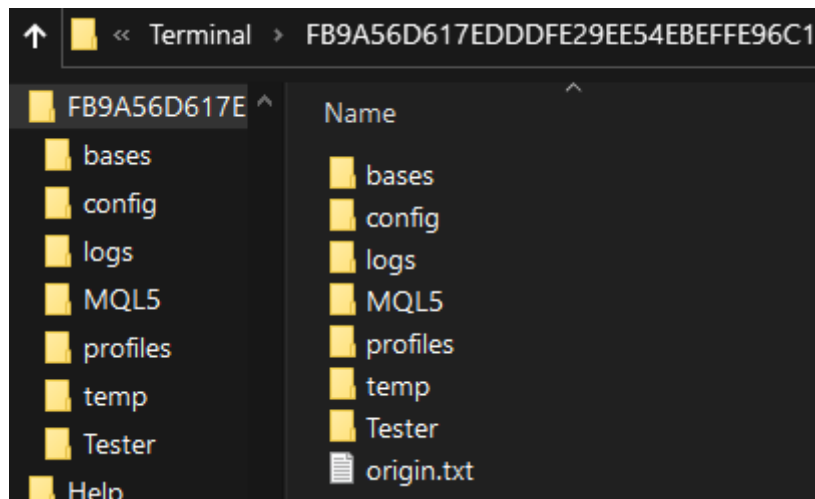
Getting Started

Setting Up the MetaTrader Terminal (One Time setup)

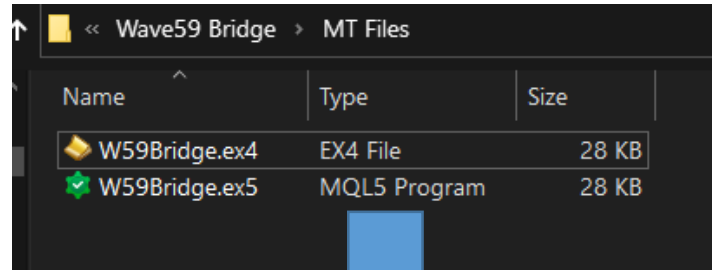
1. Open your MetaTrader terminal.
2. From the "File" menu, select "Open Data Folder."



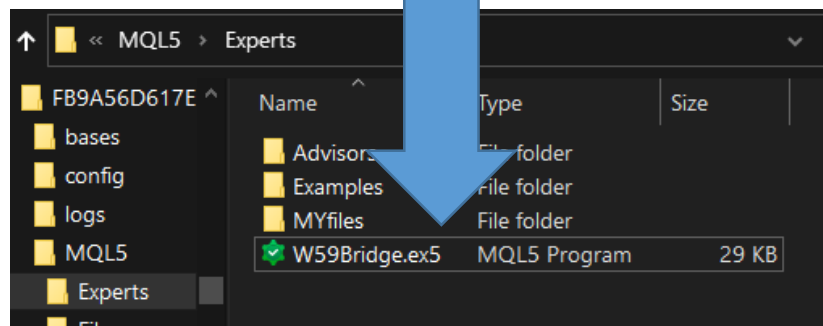
3. A window will appear, choose the appropriate folder:
 - For MetaTrader 4: Select the "MQL4" folder.
 - For MetaTrader 5: Select the "MQL5" folder.



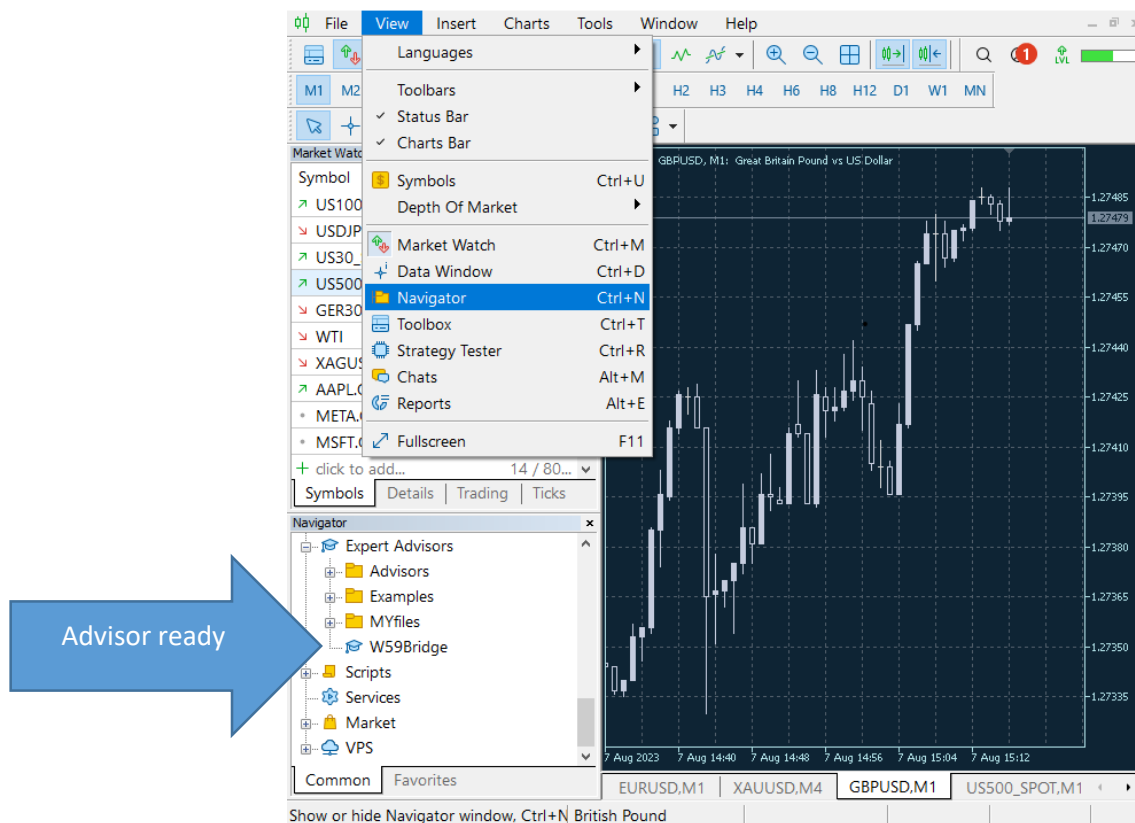
4. Inside the chosen folder, navigate to the "Experts" folder.
5. Copy the respective expert advisor file from W59bridge Folder\MT Files to "Experts" folder based on your MetaTrader version:
 - For MetaTrader 4: Copy "w59bridge.ex4" to the "Experts" folder.
 - For MetaTrader 5: Copy "w59bridge.ex5" to the "Experts" folder.



To



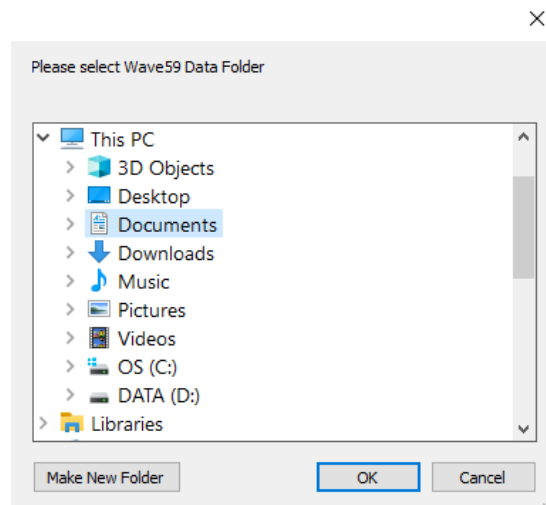
6. Restart your MetaTrader terminal to complete the setup.



7. Activate the "Allow DLL import" option from Tools>Options>Expert Advisor Tab.

Setting Up Your Wave59 Bridge for the First Time

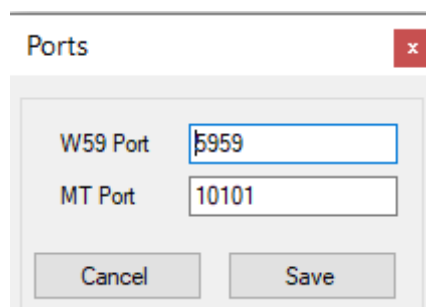
1. Run Wave59 Bridge.
2. The program will prompt you to select the Wave59 data folder.



3. For Wave59 RT users:
 - Find the data folder in the installed directory of Wave59 (e.g., "C:\Program Files (x86)\Wave59 RT\data" on Windows 7).
 - On 64-bit operating systems, consider the path:
"C:\Users\..\AppData\Local\VirtualStore\Program Files (x86)\Wave59 RT\data."
4. For Wave59 PRO users:
 - The data folder is located in your documents directory: "..\Documents\Wave59\data."

Setting the Ports

1. In **Wave59**, go to "File" > "Server Setup." Or "Data Setup"
2. Choose "Interactive Brokers (data Only) via History59."
3. Ensure that the port matches in both **Wave59** and **Wave59 Bridge**.
 - Default port for Wave59 Bridge: 5959.
 - Default port for MetaTrader: 10101.

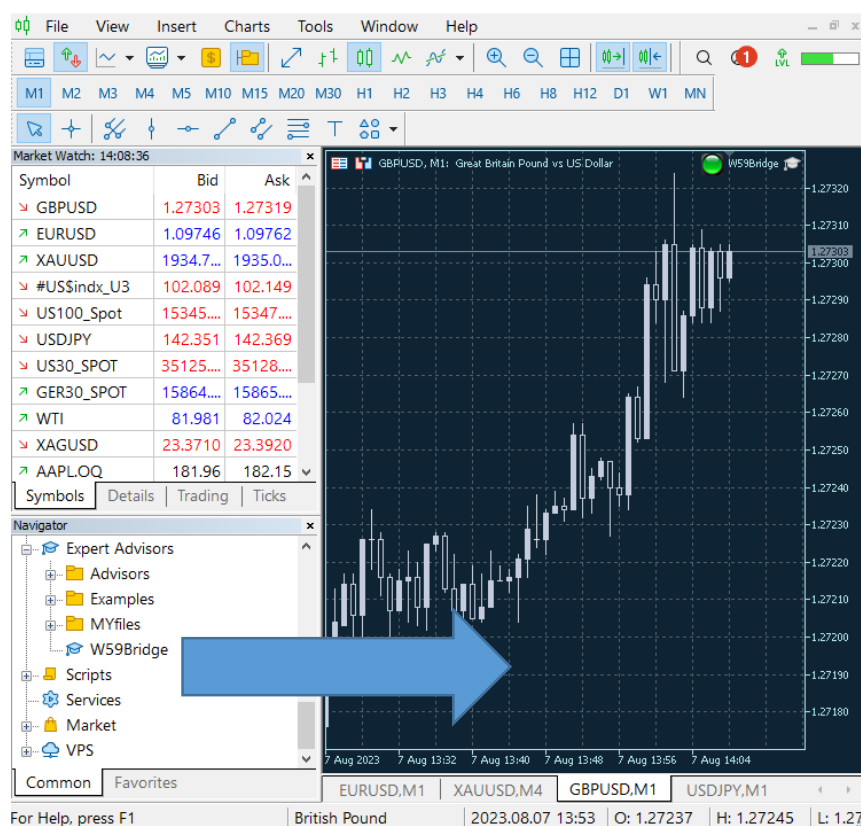


Usually you don't have to change anything, but in case you need a different port numbers it easy to change.

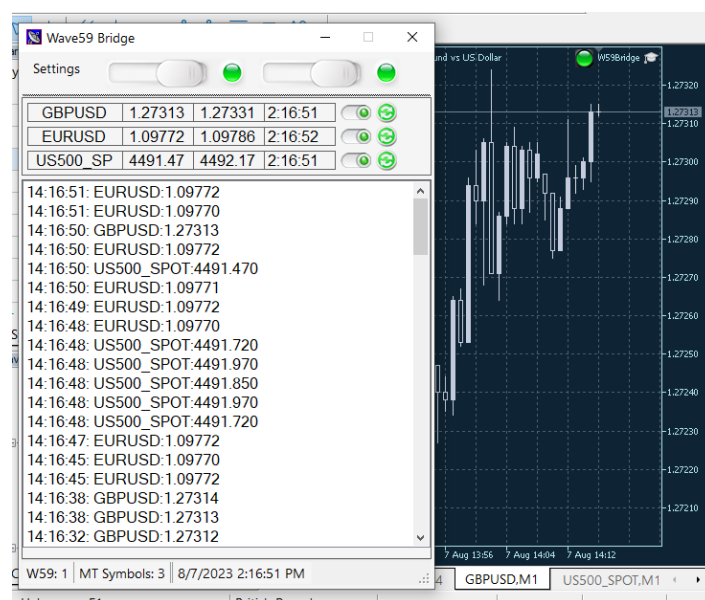
Running the System for the First Time

When you first launch W59bridge, you won't find any symbols already added or connected. You don't have to manually add them either. Here's a straightforward process to seamlessly integrate W59bridge with your MetaTrader terminal:

1. When you initially run Wave59 Bridge, no symbols will be added or connected.
2. Launch MetaTrader and open a 1-minute chart for the desired symbol.
3. After the chart updates its bars, go to "Navigator" > "Expert Advisors" > "w59bridge."

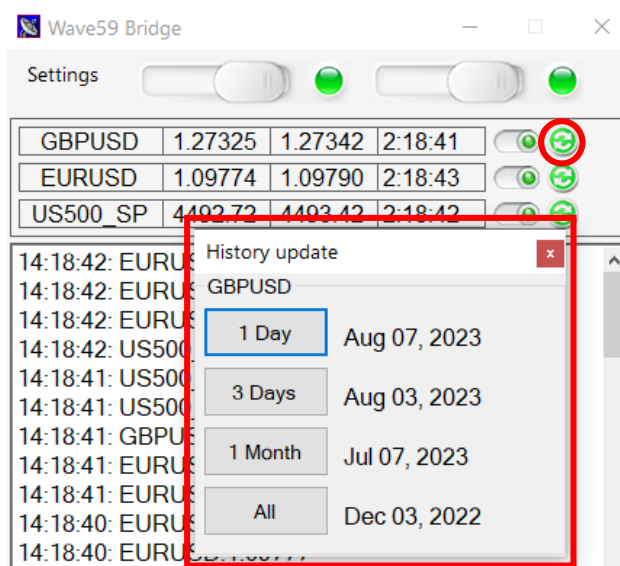


4. Double-click or drag "w59bridge" onto the chart. A symbol will be added.
5. Wave59 Bridge will collect each tick from now on.
6. Data is saved and sent to Wave59 in real-time.



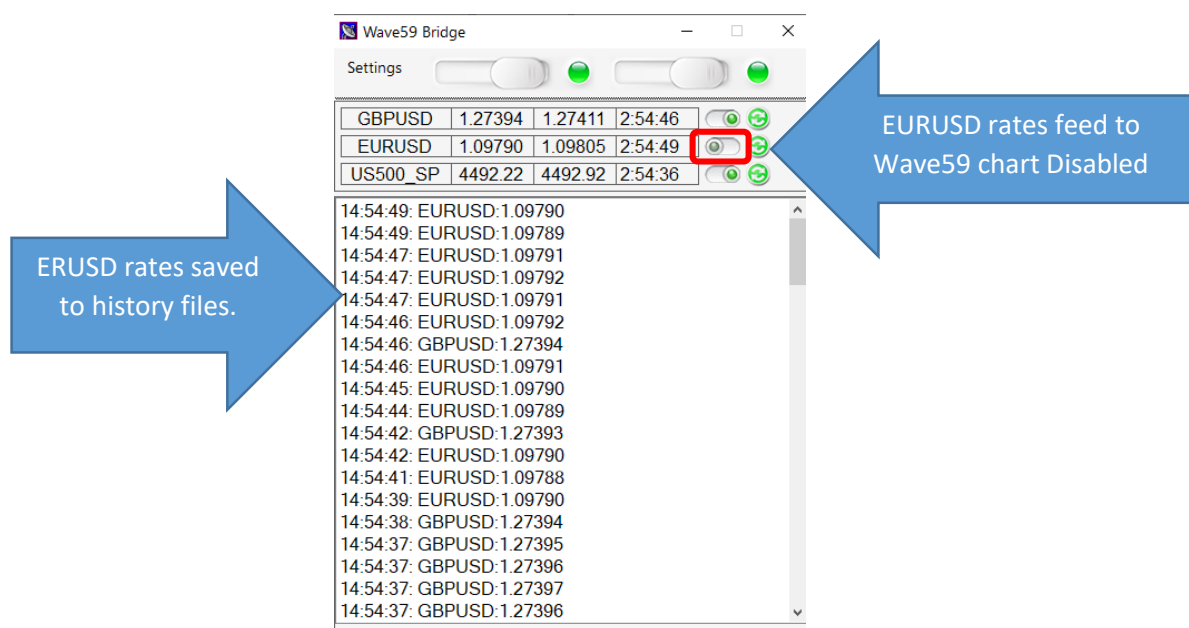
History Update and Data Integrity:

- Keep your historical data accurate without starting from scratch.
- Press the "History Update" button and select your desired time period.
- This ensures no gaps in price data, even if you add a new symbol.
- You can turn off your machine without worrying about data loss or incomplete history.
- the Max. number of history records can be determined by your setting in MetaTrader.
- For optimal historical data, remember to add the expert advisor to an exclusive 1-minute chart.
- Minimize this chart and perform your analysis on other charts within MetaTrader.
- For Larger historical data, you can change the chart time frame in MetaTrader to (5M,1H, or daily) then update the history on Wave59 Bridge.



Optimizing Data Capture:

- If you're tracking multiple symbols but primarily focused on one on chart, and want to dedicate the connection to wave59 you can tailor the data feed option.
- Use the "Feed" button to enable or disable rates sent to Wave59 Chart for specific symbols.
- Even if you disable a symbol's feed, data is still saved in real-time to history files.



The Bid/Ask prices serve as informative references, refreshed every half a second. However, it's important to note that the data stream is recorded and transmitted on a tick-by-tick basis.

GBPUSD	1.27396	1.27413	3:04:00	<input checked="" type="checkbox"/>	
EURUSD	1.09793	1.09807	3:04:22	<input type="checkbox"/>	
US500_SP	4492.47	4493.17	3:04:18	<input checked="" type="checkbox"/>	

Troubleshooting

- To ensure Wave59 Bridge is working, remove and re-add the expert advisor to your MetaTrader chart.
- Restart MetaTrader if it becomes sluggish due to resource consumption.
- Restart Wave59 Bridge at any time without issues.
- Please make sure to activate the “Allow DLL import” option from Tools>Options>Expert Advisor Tab.

